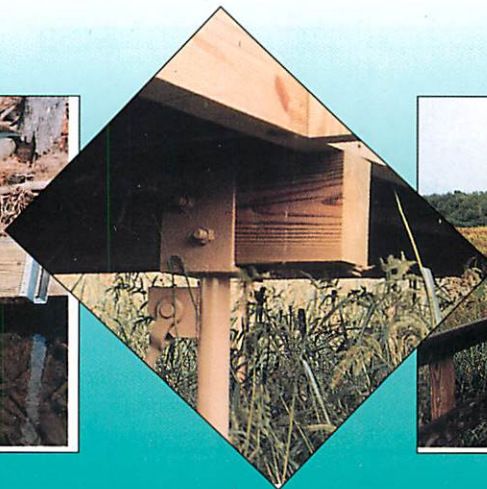
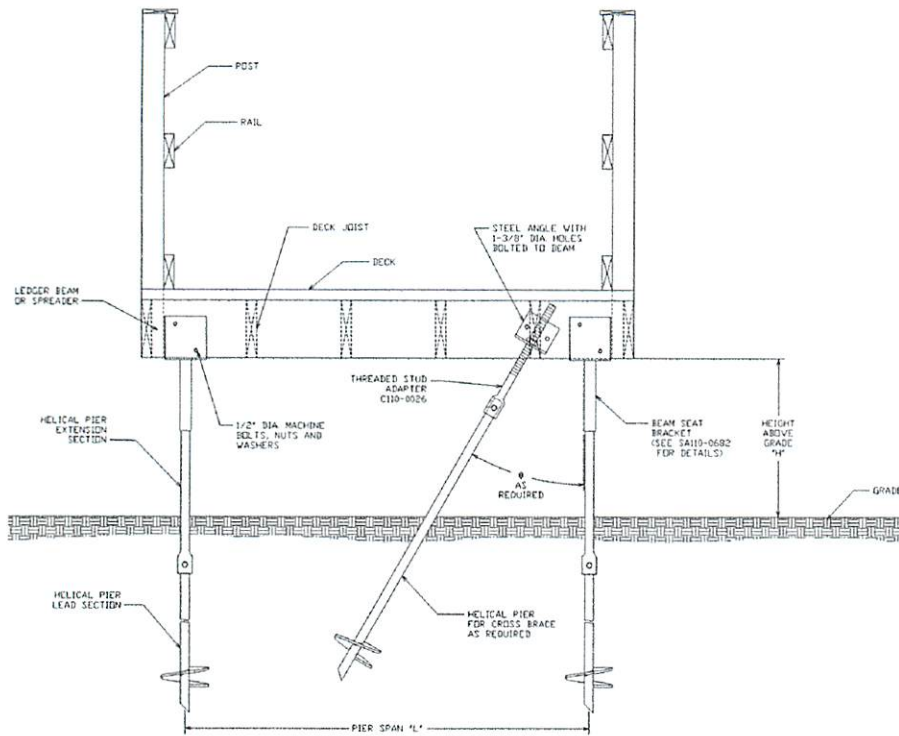


CHANCE™ INSTANT FOUNDATION® System for...

WALKWAYS



Typical Walkway Hardware Application



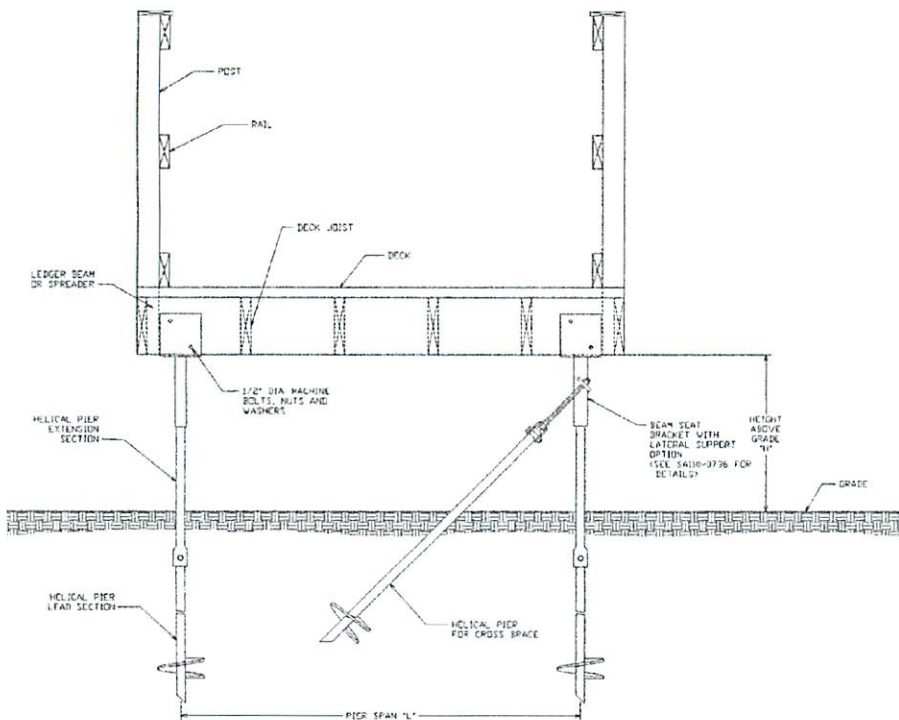
NOTE:

Where applicable, Chance[®] hardware is made from steel produced in accordance with ASTM A5 and/or ASTM A576. When galvanized, items are manufactured in accordance with ASTM A153.

Where appropriate, these hardware items comply to the following ANSI specifications:

ANSI

C135.1
C135.2
C135.22
C135.14
C135.17



ON THE COVER: Aerial view of a 1½-mile boardwalk constructed at a wetlands site for the Fairfax County, Virginia Park Authority. No wheel or track vehicles were allowed into the wetlands. The INSTANT FOUNDATION[®] anchors (Type SS5 — 1½"-square solid-steel shaft, 10"-dia. helix, hot-dip galvanized) were installed to 7- and 10-ft. depths with average above-grade reveal of 1 to 2 ft. Maximum reveal was 4½ ft.

INSTANT FOUNDATION® System

for

Walkway Support

Walkway support system

A special Beam-Seat bracket employs a 12"-long steel pipe to sleeve a 1½" SS screw foundation. The bracket's 7½"-wide flanges mount it to lateral support beams for joist and deck structures. Flanges adjust to accept beams as wide as 3½". System advantages give it accessibility to sensitive wetland areas.

- Minimal disturbance,
- Transfers loads to bearing capable strata,
- Isolates structure from seasonal surfaces layer changes,
- Modular helical foundation and extension sections,
- Portable hand-held installing equipment.

ORDERING INFORMATION

Minimum ultimate tension strength 5500 ft.-lbs. — Minimum ultimate tension strength 70,000 lbs.

LEAD SECTIONS

Catalog No.	Length	Helix Combinations	Std. Pkg./Pallet
T110-0676	7 ft.	8"	1/20
T110-0677	7 ft.	10"	1/20
T110-0678	7 ft.	12"	1/20
P012642EJ	5 ft.	10" - 12"	1/20
P012642AEJ	7 ft.	8" - 10" - 12"	1/20

EXTENSIONS

Catalog No.	Nominal length	Std. Pkg./Pallet
12655	3½ ft.	1/50
12656	5 ft.	1/50
12657	7 ft.	1/40
12658	10 ft.	1/30

Extensions with helices are available. Contact your Chance representative for information.

BEAM SEAT BRACKET

Hole size for ½" bolt. 10,000 lb. max. load compression only.

Catalog No.	Length	Saddle Width	Std. Pkg./Pallet
C110-0682	12"	3½"	4/148

GUY ADAPTERS

Catalog No.	Nominal length	Description	Std. Pkg./Pallet
C102-0023	18"	Thimbleye	5/175
C102-0024	18"	Twineye	5/250
C102-0025	18"	Tripleye	5/250
C110-0026	20"	Threaded Stud	5/130
C110-0041	18"	Ovaleye	5/200

NO-WRENCH SCREW ANCHOR

Catalog No.	Anchor Size	Rod Dia. & Length	Std. Pkg./Pallet
6346	6"	¾" x 66"	1/100
816	8"	1" x 66"	1/60
10146	10"	1¼" x 66"	1/20

Minimum ultimate torsion strength: ¾" Rod 400 ft.-lbs.
1" Rod 1000 ft.-lbs.
1¼" Rod 2300 ft.-lbs.



Walkway Hardware

BOLTS, CARRIAGE

Carriage Bolts have square nuts, finished points and rolled threads. Standard heads have square shoulders. Open-hearth steel. Hot dip galvanized.



No. 8634

Cat. No.	Dim. in Inches		Approx. Ship Wt. Lbs Per 100 Pcs.
	Bolt Length	Thread Length	
3/8-Inch Diameter			
8634	4	1¾	15.6
8634½	4½	1¾	17
8635	5	1¾	17.6
8636	6	1¾	21.6
8637	7	1¾	22

4,250 Pound Minimum Ultimate Tensile Strength

Cat. No.	Dim. in Inches		Approx. Ship Wt. Lbs. Per 100 Pcs.
	Bolt Length	Thread Length	
1/2-Inch Diameter			
8644 1/2	4 1/2	3	32
8645	5	3	31
8645 1/2	5 1/2	3	37.5
8646	6	3	38
8647	7	4	44

7,800 Pound Minimum Ultimate Tensile Strength

BOLTS, MACHINE

Are also called crossarm bolts or through bolts. Bolts have rolled threads and one square nut. Bolts six inches or longer have cone-type points. Hot dip galvanized.



No. 8707

Cat. No.	Dim. in Inches		Approx. Ship Wt. Lbs. Per 100 Pcs.
	Bolt Length	Thread Length	
1/2-Inch Diameter			
8707	7	3	48
8708	8	4	49
8709	9	4	57
8710	10	4	60
8712	12	6	71
8714	14	6	73

7,800 Pound Minimum Ultimate Tensile Strength

BOLTS, OVALEYE

Bolts with 5/8" and 3/4" shanks have 1 1/2" x 2" ovaeyes. Drop-forged, galvanized steel bolts have cone type points and rolled threads.

Catalog No.	Length Under Eye Inches	Thread Length Inches	Approx. Ship Wt. Lbs. Per 100 Pcs.
-------------	-------------------------	----------------------	------------------------------------

1/2-Inch Shank Diameter 7/16" x 1 1/4" x 1 5/8" Ovaleye

29939	8	4	77
-------	---	---	----

7,800 Pound Minimum Ultimate Tensile Strength

5/8" Shank Dia — 9/16" x 1 1/2" x 2" Ovaleye

29956	6	4	100
29958	8	4	104
29959	9	4	113
29960	10	6	122
29962	12	6	144
29964	14	6	146
29966	16	6	168
29968	18	6	208
29970	20	6	240

12,400 Pound Minimum Ultimate Tensile Strength

Catalog No.	Length Under Eye Inches	Thread Length Inches	Approx. Ship Wt. Lbs. Per 100 Pcs.
-------------	-------------------------	----------------------	------------------------------------

3/4" Shank Dia — 5/8" x 1 1/2" x 2" Ovaleye

29978	8	4	180
29980	10	4	200
29982	12	6	228
29984	14	6	248
29986	16	6	268
29988	18	6	314

18,350 Pound Minimum Ultimate Tensile Strength

No. 29960



BOLTS, SCREW EYE

Gimlet-point lag-screw thread. Drop-forged. Hot dip galvanized.

Catalog No.	Type	Dimensions in Inches			Approx. Ship Wt. Lbs. Per 100 Pieces
		Size of Eye	Dia.	Length Under Eye	
29930	Ovaleye	1 1/4 x 1 5/8	1/2	6	65
09931	Thimbleye	9/16 x 1 1/16	5/8	6 3/4	112

No. 09931

No. 29930



Walkway Hardware

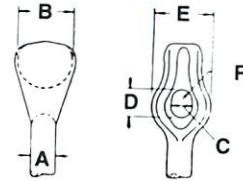
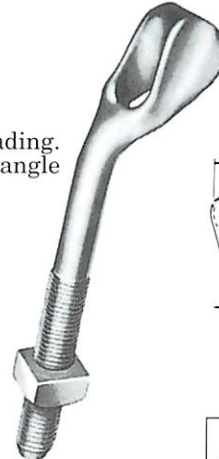
BOLTS, THIMBLEYE® BOLTS

Contoured eye keeps guy strand from kinking, bending, or spreading. Drop-forged steel. Hot dip galvanized. Cone-type points. Eyes of angle bolts are offset 45 degrees.

Catalog No.		Size Inches	Thread Length Inches	Approx. Ship Wt. Lbs. Per 100 Pcs.
Straight Bolt	Angle Bolt			
5510	5010	5/8 x 10	4	148
5512	5012	5/8 x 12	6	176
5514	5014	5/8 x 14	6	188
5516	5016	5/8 x 16	6	192

12,400 Pound Minimum Ultimate Tensile Strength

Angle Bolt



Dimensions in Inches					
A	B	C	D	E	R
5/8	1 3/8	9/16	1 1/16	1 1/2	1/4

Straight Bolt



CLIPS, WIRE ROPE GUY WIRE

Body of each clip is cast ductile iron designed to fit the strand, which is protected by smooth-rounded contact surfaces. Bolts are made of high-strength steel.

Catalog No.	Size of Strand, In.	Approx. Ship Wt. Lbs. Per 100 Pcs.
6480	1/4	12.5
6481	5/16	13.5
6482	3/8	22.5
6484	1/2	56.3
6485	5/8	111

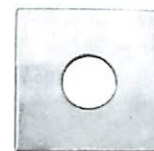
No. 6485



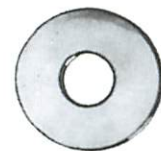
ROUND WASHERS

Catalog No.	Dimensions in Inches			Approx. Ship Wt. Lbs. Per 100 Pieces
	Washer Size	Hole Dia.	Bolt Dia.	
6801	1 O.D. x 14 Ga.	7/16	3/8	1.64
6802	1 1/4 O.D. x 14 Ga.	9/16	3/8	2.84
6803	1 3/8 O.D. x 12 Ga.	9/16	1/2	4.50
6805	1 3/4 O.D. x 12 Ga.	11/16	5/8	8.50
6806	2 O.D. x 9 Ga.	13/16	3/4	11.80

WASHERS Galvanized



Square

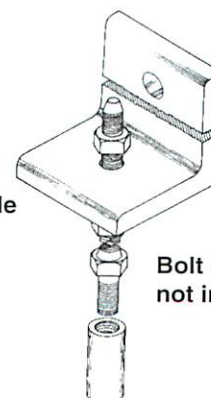


Round

SQUARE WASHERS

Catalog No.	Dimensions in Inches			Approx. Ship Wt. Lbs. Per 100 Pieces
	Washer Size	Hole Dia.	Bolt Dia.	
6811	2 x 2 x 1/8	9/16	1/2	13
6812	2 x 2 x 1/8	11/16	5/8	12
6813	2 1/4 x 2 1/4 x 3/16	11/16	5/8	24

Clip Angle



Tophole
1.06" dia.

Bolt and Adapter
not included

CLIP ANGLE

Catalog No.	Dimensions
P102-0333	3 1/2" x 5" x 5/8" x 3 1/2" long hole, to accept 3/4" bolt"

Portable Anchor Installers

for small foundations

• 2,500 ft.-lb. torque capacity hydraulic power drive

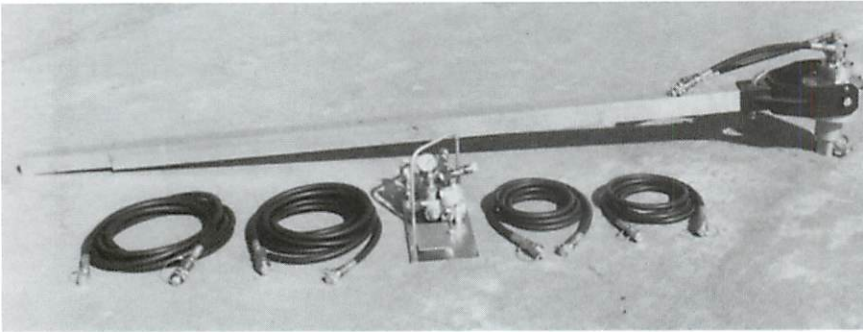
Manual-operated portability for economy, remote sites, common anchor installations

For most shaft-driven guy anchors and smaller screw foundations, these compact drivers get into areas where large equipment cannot go or is impractical. Operator does not need to resist the torque generated by anchor installation. Countertorque transmits through a torque bar from the drive head to the earth or other restraint. This frees the operator for the task of guiding the anchor path.

Built-in bypass valve limits output to 2,500-ft.-lb. maximum, two-way foot pedal gives operator direct control over drive and reverse directions, hoses (two 12-ft. and two 25-ft.) come with quick couplers for all connections from power supply to foot control to drive head. Pivoting drive-head yoke connects with bent-arm pin to square-tubular torque bar which telescopes from 8 feet to 10 feet as needed.

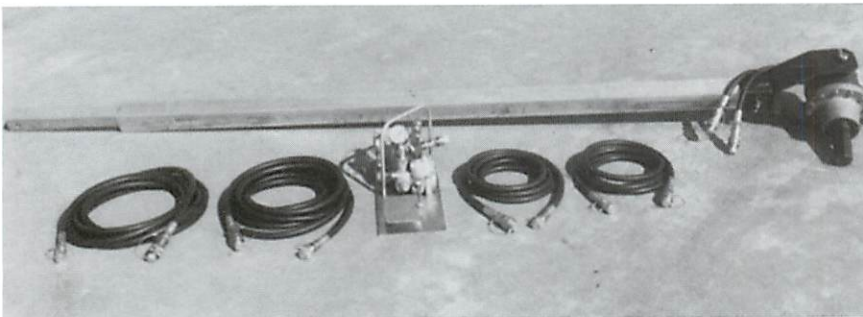
For a heavy-duty, portable Hydraulic Power Unit also available, see below.

See next page for Ordering Information.



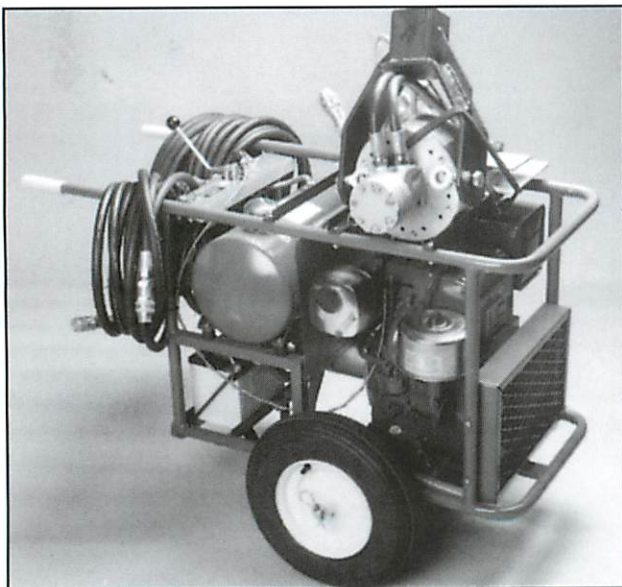
C303-1032

Medium-Duty Driver requires 1550 PSI at 8 gpm flow rate to deliver 2,500 ft.-lb. maximum torque.



C303-1244

Heavy-Duty Driver requires 1,900 PSI at 8 gpm flow rate to deliver 2,500 ft.-lb. maximum torque.



Optional Hydraulic Power Unit (Catalog No. C303-1201):

For easy wheeling to worksite, hydraulic drive head and foot control secure by rubber strap included to angle braces atop the cart frame and hoses ride on handles.

Cart-mounted on $\frac{5}{8}$ "-diameter axle with two 4.80 x 8 inflatable (30psi) tires; 27 $\frac{1}{4}$ " wide x 34 $\frac{1}{2}$ " high x 36" long; shipping weight with oil: 275 lb.

Hydraulic Pump with fan cooling system:

Typical output pressure 2500psi
Pump displacement 8gpm @ 3400rpm
Reservoir capacity 5 gallons US
(shipping cap and vented fill cap provided)

Gasoline Engine System:

16hp Briggs & Stratton
Industrial/Commercial Model 326437, Type 2527
12-Volt pushbutton start, 3600rpm (maximum)

Operating instructions are included with anchor installer and hydraulic power unit.

2500 ft.-lb. Portable Anchor Installers

for small foundations

Ordering Information

Medium Duty — Catalog No. C303-1032

Grease filled gear case. Single Catalog Number above includes all items below. Each item also may be ordered by separate number.	
* Hydraulic Control Valve	C303-1031
Two 25-ft. Hydraulic Hoses	C417-6121 (each)
* Hydraulic Drive Head	C303-1180
Yoke Assembly	E303-0680
* Two 12-ft. Hydraulic Hoses	E303-0876 (pair)
Square Torque Bar Ass'y.	E303-1041

Output shaft is 1½" square socket. Requires C303-1230 and flanged drive tool (order separately) to install anchors other than 1½" square 1¼" round shaft.

* Note: Hydraulic components are not interchangeable between C303-1032 and C303-1244

Heavy Duty — Catalog No. C303-1244

Sealed oil-filled gear case. Single Catalog Number above includes all items below. Each item also may be ordered by separate number.	
* Hydraulic Control Valve	C303-1247
Two 25-ft. Hydraulic Hoses	C417-6121 (each)
* Hydraulic Drive Head	C303-1233
Yoke Assembly	E303-0680
* Two 12-ft. Hydraulic Hoses	E303-1253
Square Torque Bar Ass'y.	E303-1041

Output Shaft is 2 inch Hex. - Requires Kelly Bar Adapter P630013 and flanged drive tool (order separately) to install all anchors.

* Note: Hydraulic components are not interchangeable between C303-1032 and C303-1244

Anchor Installing Tools

Tool E303-0255



for No-Wrench Anchors
to 1¼" dia.
(Cat. Sec. 4) & Type GP
Foundations
using temporary eyenut

Tool 639001



for
1½"SS & 1¼"RR
Anchors
(Bulletin 01-0203)

Tool 639000



for
Square-Drive
Type LD Foundations

Tool C130-0010



for
Flange-Drive
"Pad-Pod"
Foundations

Tool C303-0737



for
Bumper Posts
(Bulletin 01-0203)

Tool C303-1230

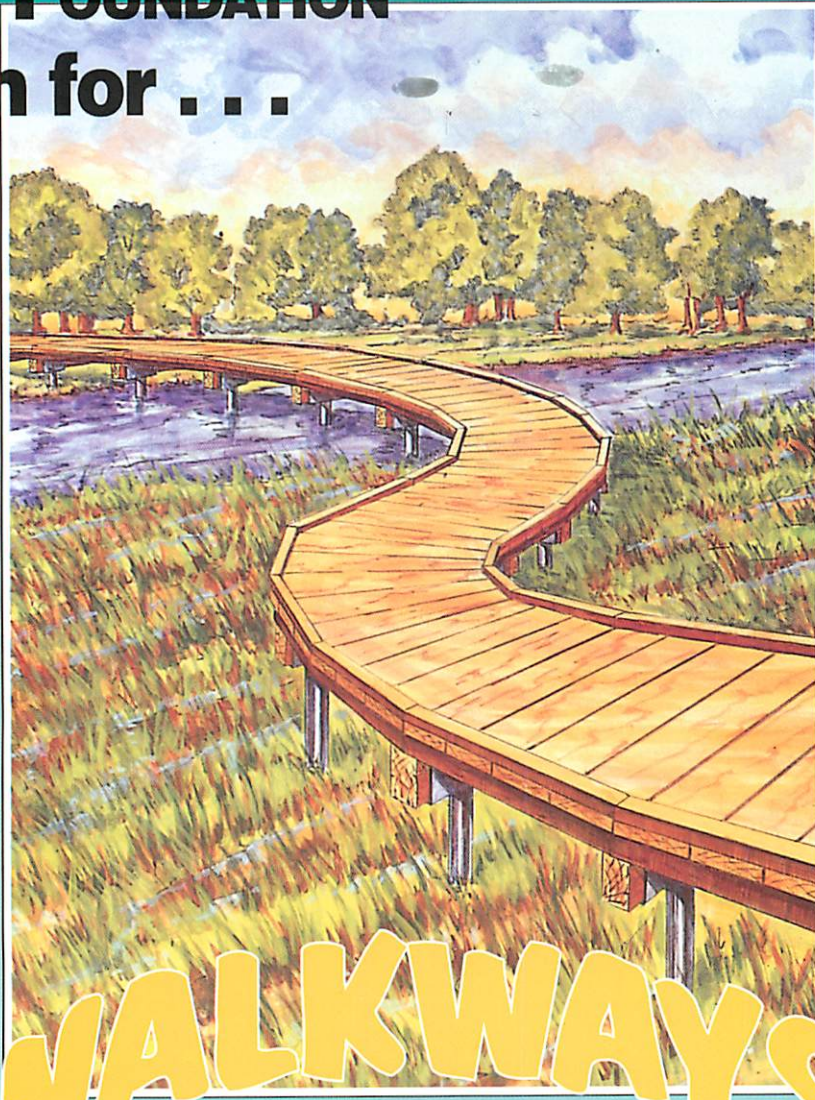


for
Catalog C303-1032 to
adapt to
5¼" Bolt Circle

To drive wrench-type anchors with these portable installers, consult factory.

CHANCE[®]

INSTANT FOUNDATION[™] System for . . .



WALKWAYS

NOTE: Because Hubbell has a policy of continuous product improvement, we reserve the right to change design and specifications without notice.

CHANCE[™]

Since 1912

Centralia, MO 65240 USA
Email: hpsliterature@hps.hubbell.com
Tel: 573-682-8414 Fax: 573-682-8660

www.abchance.com

Bulletin 4-9605
Rev. 10/08 RGS3M

©Copyright 2008 Hubbell Incorporated Printed in USA



ISO 9001
QMI-SAI Global
CERT-0018053